

Installation Manual

Direct Dye Sublimation Printer CX-120

Printer Software



Operating Environment

This software runs on the following systems.

- Microsoft® Windows® 8 32bit/64bit
- Microsoft® Windows® 7 (First Release, Service Pack 1) 32bit/64bit
- Microsoft® Windows Vista™ (Service Pack 1/2) 32bit
- Microsoft® Windows® XP (Service Pack 2/3) 32bit
- Microsoft® Windows® 2000 Professional (Service Pack 4) 32bit

Software License Agreement

Users need to accept the terms and conditions of the software license agreement to use this software. Please read through the “Software License Agreement” at the back of the “Startup Guide” (separate booklet) before using this software.

Apr. 2014, 9th Edition

Contents

Installer (Automatic Execution Program).....	3
Application-Based Operation Guide	5
 Installation	 6
Installing the Printer Driver	6
Installing the Status Monitor.....	12
Installing the USB Driver.....	14
Installing the Printer Driver: Shared Network	19
 Uninstallation	 23
Deleting the Printer Driver	23
Updating the Printer Driver	24
Deleting the Status Monitor.....	25
Updating the Status Monitor	25

Notes about this manual

- (1) All rights reserved. Unauthorized reproduction and use of this manual is strictly prohibited.
- (2) Details of this manual or printer specifications and appearance are subject to changes without prior notice.
- (3) Illustrations used in this manual may differ slightly from the actual product.
- (4) Microsoft and Windows are either registered trademarks or trademarks of Microsoft Corporation in the United States and/or other countries. Microsoft® Windows® 8 operating system, Microsoft® Windows® 7 operating system, Microsoft® Windows Vista™ operating system, Microsoft® Windows® XP operating system and Microsoft® Windows® 2000 operating system are represented as Windows® 8, Windows® 7, Windows Vista™, Windows® XP and Windows® 2000 respectively in this manual.
- (5) Microsoft product screen shot(s) reprinted with permission from Microsoft Corporation.

Installer

Installer (Automatic Execution Program)

Outline

Using the installer (automatic execution program) enables you to install the printer software as well as open the folder containing the electronic manual easily.

The installer installs programs according to the language settings of Windows®. To change the language settings, make use of the Language pull-down menu. (To be explained later)

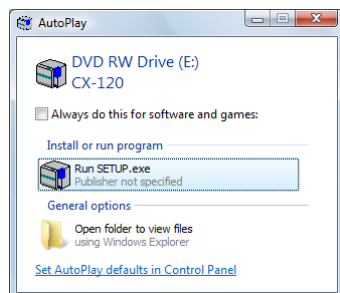
Operating Environment

This software runs on the following systems.

- Microsoft® Windows® 8 32bit/64bit
- Microsoft® Windows® 7
(First Release, Service Pack 1) 32bit/64bit
- Microsoft® Windows Vista™
(Service Pack 1/2) 32bit
- Microsoft® Windows® XP
(Service Pack 2/3) 32bit
- Microsoft® Windows® 2000 Professional
(Service Pack 4) 32bit

Caution

Login as a user with the administrator authority (Administrators group), to install or delete the software.

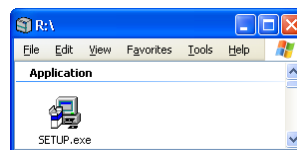


Operating Procedure

Caution

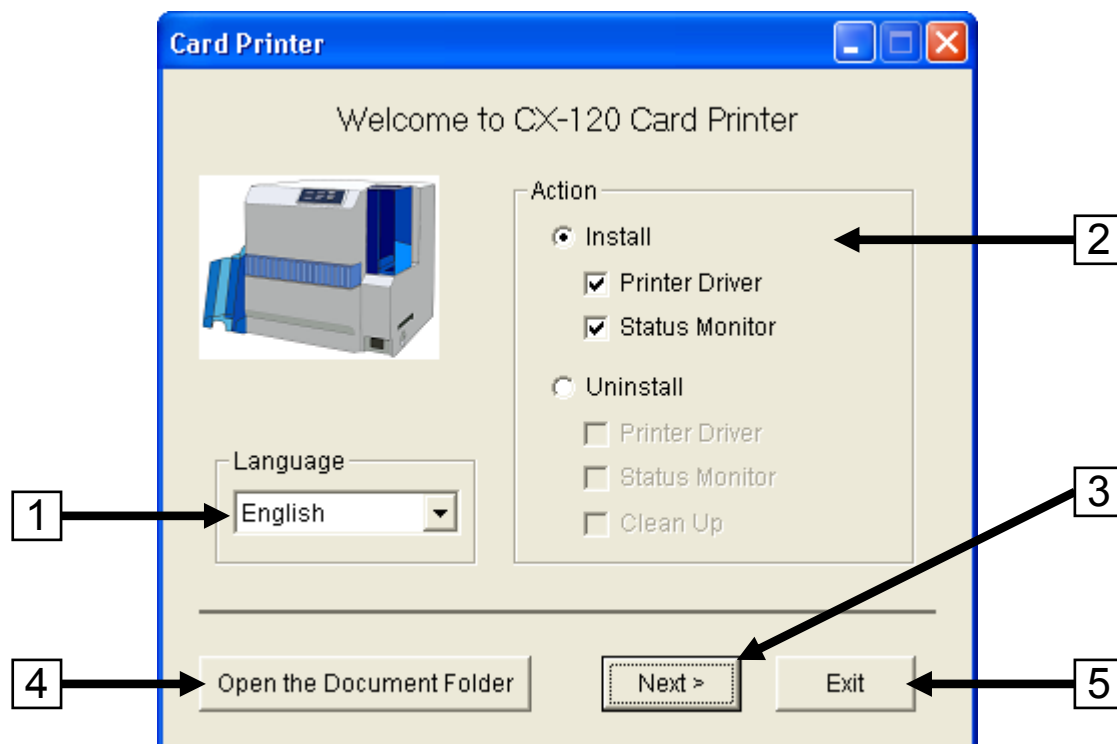
Some of the figures in this manual may not appear depending on the operating environment of the PC. Skip the steps in this case.

- 1.** Do not connect the printer to the USB, or turn on the power of the printer until instruction asking you to do so appears.
- 2.** Start up Windows®, and set the CD-ROM supplied in the PC.
- 3.** The installer runs automatically on PCs that plays back the CD-ROM drive automatically. If the installer does not run automatically, double-click “SETUP.exe” in the CD-ROM folder.



- 4.** When the “Autoplay” screen appears, click the [Run SETUP.exe] button. Refer to left-side screen. (Windows® 8 / Windows® 7 / Windows Vista™)
- 5.** When the “User Account Control” screen appears, click the “YES” or “Allow” button. (Windows® 8 / Windows® 7 / Windows Vista™)
- 6.** The following screen appears.

Installer (Cont'd)



Step	Description
1	Select the language to use from the pull-down menu. (1) Selecting "Japanese" switches the program to the Japanese version. (2) Selecting "English" switches the program to the English version.
2	Select a program action. (1) To install the program, click "Install" and tick the "Printer Driver" and "Status Monitor" boxes accordingly. (2) To uninstall the program, click "Uninstall" and tick the "Printer Driver" and "Status Monitor" boxes accordingly.
3	Start installation or uninstallation. (1) The printer driver (including the USB driver) is installed, followed by the status monitor. (2) Uninstallation starts from the printer driver (including the USB driver), followed by the status monitor.
4	Open the folder containing the electronic manual.
5	Exit the installer (automatic execution program).

Installer (Cont'd)

Application-Based Operation Guide

Application	Installer Options		Refer to
	Action		
Print via USB connection	Install	Printer Driver	Page 6
		Status Monitor	Page 12
Print using a USB connection printer with programs installed via a shared network.	Share the network using features of Windows®.		Page 19
Set the setting of printer unit's. Monitor the printer status.	Install the USB driver using features of Windows®.		Page 14
	Install	Status Monitor	Page 12
Delete the USB connection printer	Uninstall	Printer Driver	Page 23
Delete the status monitor	Uninstall	Status Monitor	Page 25

Installation

Installing the Printer Driver

1. Do not connect the printer to the USB, or turn on the power of the printer until instruction asking you to do so appears on the installer.

Caution

You need to enable the USB hub before connecting the printer via this hub.

Do not connect the printer to the USB hub until it is enabled.

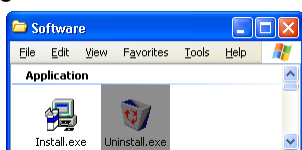
2. Start up Windows®, and set the CD-ROM supplied into the PC.

Caution

Installing needs administrator authority.

3. If you are not using the “SETUP.exe” automatic execution program in the CD-ROM, start the installer for the printer driver by double-clicking the following file in the CD-ROM.

“English\Software\install.exe”



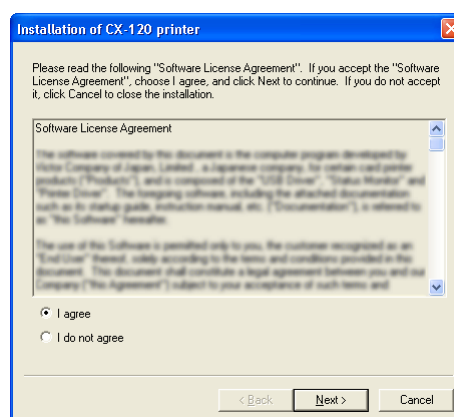
Note

To use the “SETUP.exe” automatic execution program, refer to the chapter on “Installer (Automatic Execution Program).” You can start the installer for the printer driver using the automatic execution program.

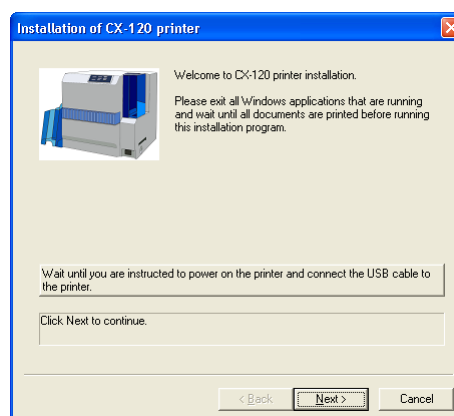
4. When the screen below appears, read through the “Software License Agreement”.

If you agree to the terms and conditions of the software license agreement, select [I agree] and click the [Next] button.

If you do not agree, click the [Cancel] button to stop the installation.



5. When the following screen appears, check the content, followed by clicking the [Next] button.

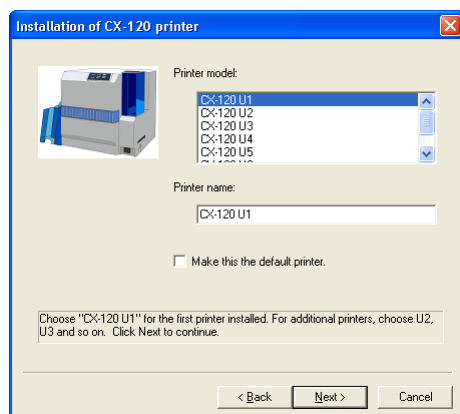


Caution

Exit all applications that are currently running. If document printing is currently in progress, wait for all the print jobs to complete.

Installation (Cont'd)

- 6.** When the following screen appears,
- (1) select a [Printer model] using the table below as reference,
 - (2) enter the [Printer name],
 - (3) select [Make this the default printer] if necessary,
 - (4) and click the [Next] button.



Printer Unit No.	Printer Model Options	USB Device Name
1 (Factory Setting)	CX-120 U1	CX-120 U1
2	CX-120 U2	CX-120 U2
3	CX-120 U3	CX-120 U3
4	CX-120 U4	CX-120 U4
5	CX-120 U5	CX-120 U5
6	CX-120 U6	CX-120 U6
7	CX-120 U7	CX-120 U7

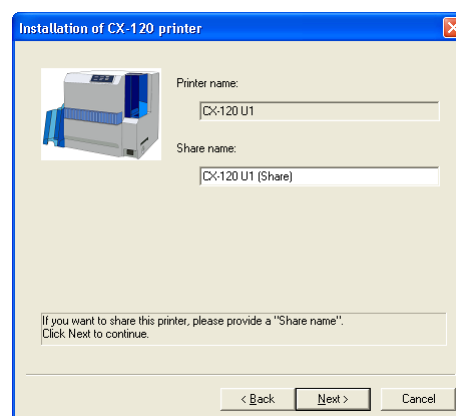
Caution

Select a printer model according to the printer unit number. Installation may fail if the combination is incorrect.

Note

Refer to the item on “Connecting Multiple Printers” in the “Startup Guide” (separate booklet) for details on the printer unit number.

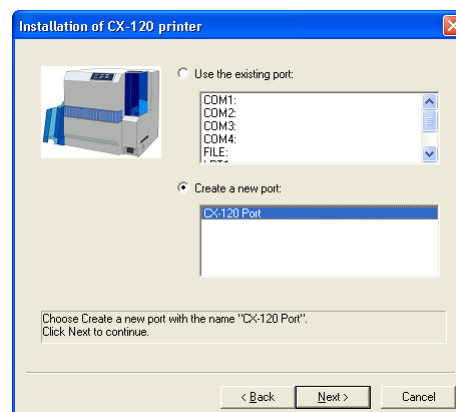
- 7.** When the following screen appears,
- (1) enter the [Share name] if you are sharing the printer,
 - (2) and click the [Next] button.



Note

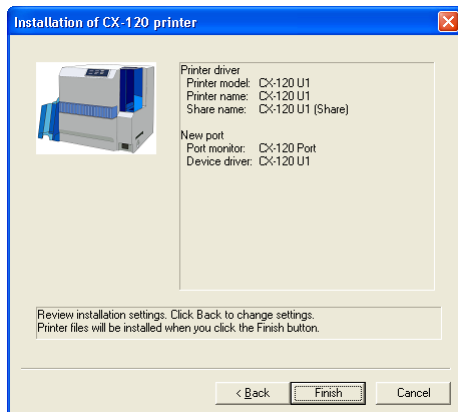
Sharing of printers can also be set after installation is complete.

- 8.** When the following screen appears,
- (1) select [CX-120 Port] from [Create a new port],
 - (2) and click the [Next] button.



Installation (Cont'd)

- 9.** When the following screen appears, check the printer's installation information. Click [Finish] to start installation.

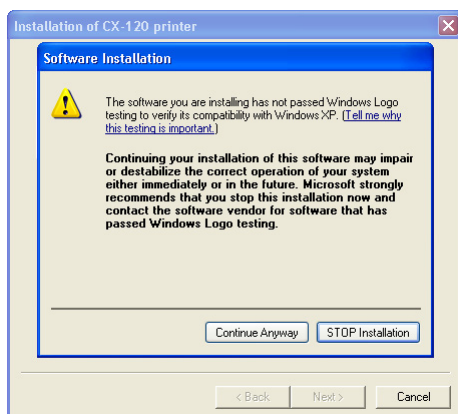


Note

To change the setting, click the [Back] button.

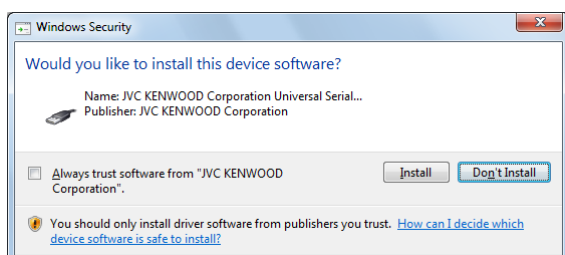
- 10.** When the following screen appears, click the [Continue Anyway] button.

(Windows® XP)



When the following screen appears, click the [Install].

(Windows® 8 / Windows® 7 / Windows Vista™)



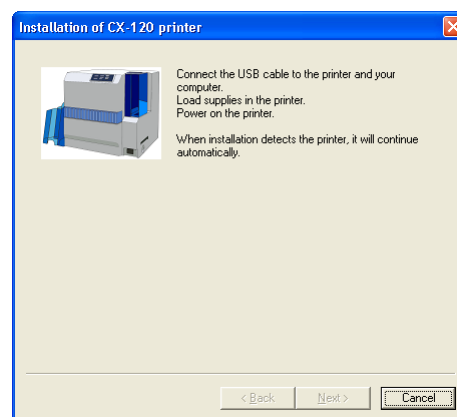
Note

When the above screen appears at any procedure, click the [Install].

- 11.** When the following screen appears,

- (1) connect the PC and the printer using the USB cable,
- (2) and turn on the power of the printer.

Installation continues after the printer is detected.



Caution

If the connection is improper, the screens of next pages do not appear as the printer will not be detected.

Note

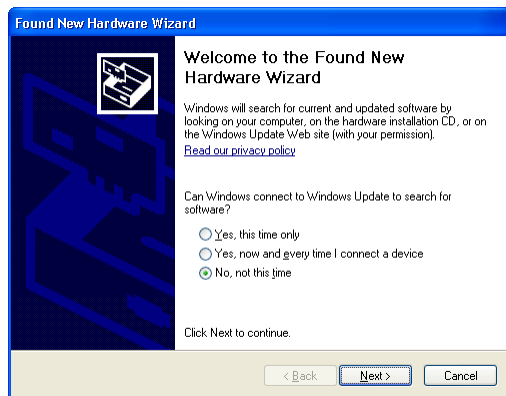
On Windows® 8 / Windows® 7 / Windows Vista™, the next screen is No.16.

Installation (Cont'd)

12. When the following screen appears,

- (1) select [No, not this time],
- (2) and click the [Next] button.

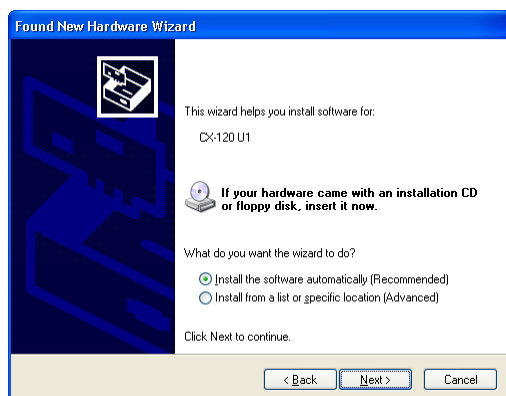
(Windows® XP)



13. When the following screen appears,

- (1) select [Install the software automatically],
- (2) and click the [Next] button.

(Windows® XP only)

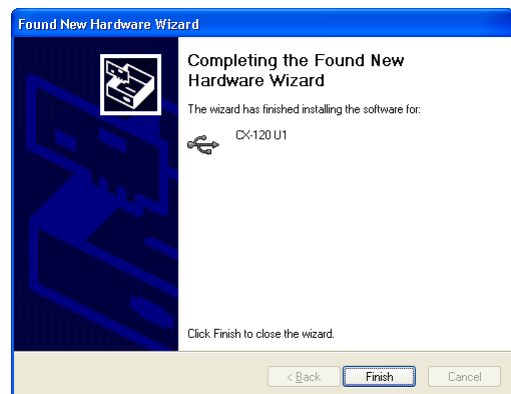


14. When the following screen appears, click the [Continue Anyway] button.

(Windows® XP only)



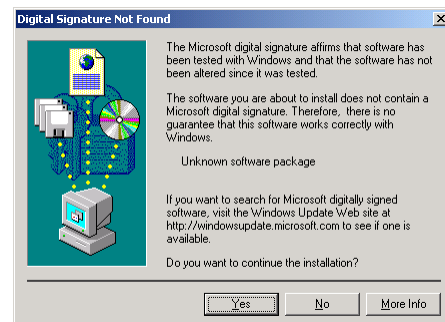
15. When the following screen appears, click the [Finish] button. (Windows® XP only)



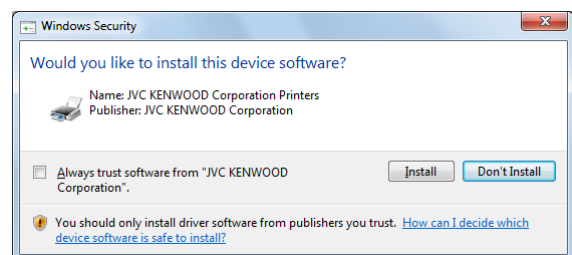
16. When the following screen appears, click the [Continue Anyway] button. (Windows® XP)



When the following screen appears, click the [Yes] button. (Windows® 2000)



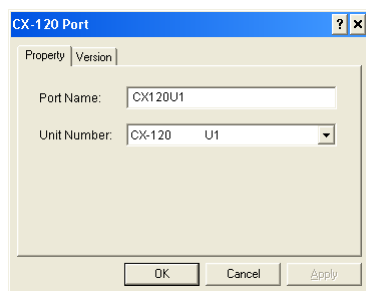
When the following screen appears, click the [Yes] button. (Windows® 8 / Windows® 7 / Windows Vista™)



Installation (Cont'd)

17. When the following screen appears,

- (1) select the [Property] tab,
- (2) select the printer that coincides with the USB device name from the [Printer List] by referring to Step 6,
- (3) enter the port name in the [Port Name] field,
- (4) and click the [OK] button.



Caution

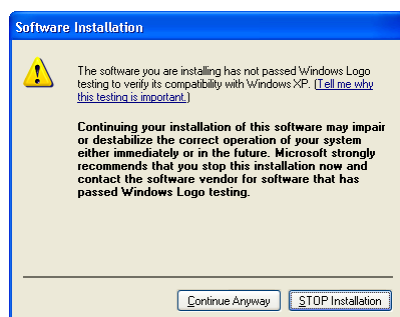
USB connection is improper if [No Device] appears in the [Printer List] field. In this case, complete the installation procedures, followed by re-installing the printer driver.

Note

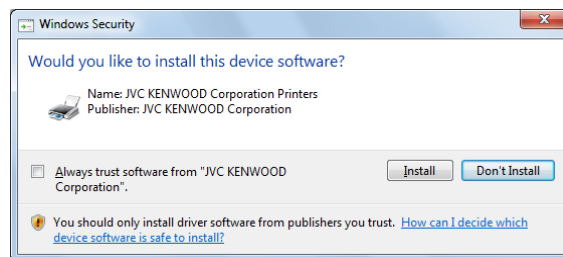
If [No Selection] appears in the [Printer List] field, select an item that coincides with the unit number of the printer that is currently being installed from the pull-down menu.

18. When the following screen appears, click the [Continue Anyway] button.

(Windows® XP)



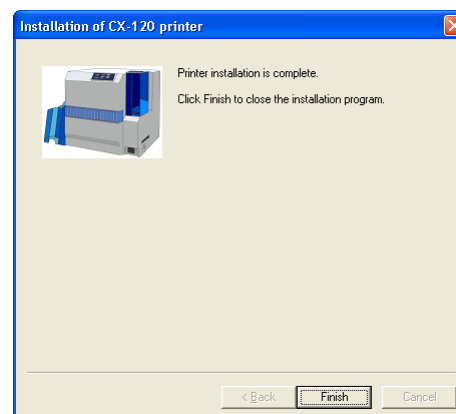
When the following screen appears, click the [Install]. (Windows® 8 / Windows® 7 / Windows Vista™)



When the following screen appears, click the [Yes] button. (Windows® 2000)



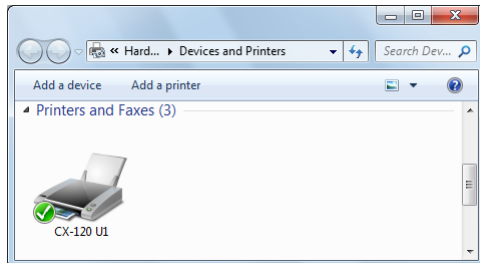
19. When the following screen appears, click the [Finish] button to exit the program.



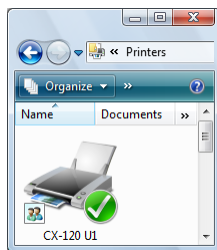
Installation (Cont'd)

- 20.** Open [Devices and Printers] or [Printers] in the [Control Panel], and check that the printer has been added.

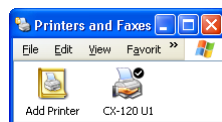
Windows® 8 / Windows® 7



Windows Vista™



Windows® XP



Installation of the printer driver is complete.

Caution

To delete a printer, do so using [Delete printer driver] after restarting Windows®.

Installing the Status Monitor

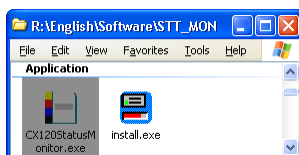
1. Start up Windows®, and set the CD-ROM supplied into the PC.

Caution

Installing needs administrator authority.

2. If you are not using the “SETUP.exe” automatic execution program in the CD-ROM, start the installer for the status monitor by double-clicking the following file in the CD-ROM.

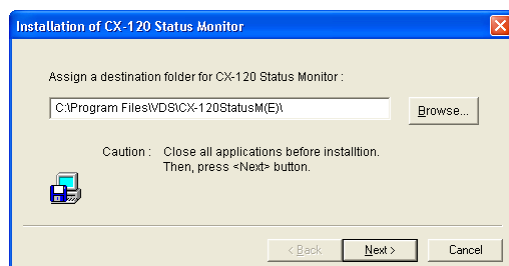
“English\Software\STT_MON\install.exe”



Note

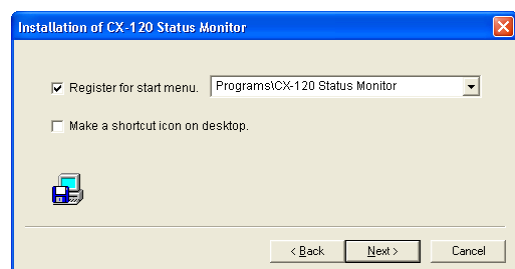
To use the “SETUP.exe” automatic execution program, refer to the chapter on “Installer (Automatic Execution Program).” You can start the installer for the status monitor using the automatic execution program.

3. When the following screen appears,
 - (1) specify the destination to install the status monitor,
 - (2) and click the [Next] button.

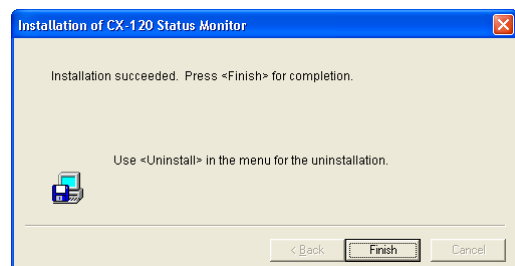


4. When the following screen appears,
 - (1) select [Register for start menu],
 - (2) select the [Make a shortcut icon on desktop.] checkbox if necessary,
 - (3) and click the [Next] button.

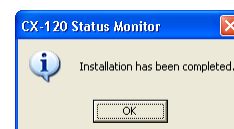
Installation starts.



5. When the following screen appears, click the [Finish] button.

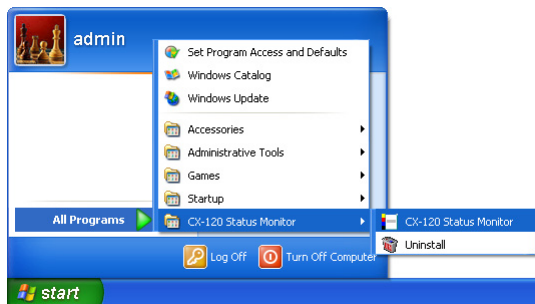


6. When the following screen appears, click the [OK] button to exit the installer.



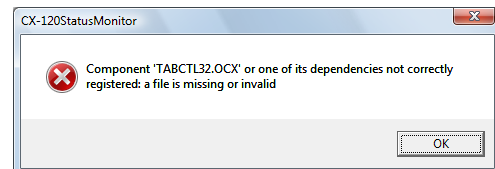
Installation (Cont'd)

After installation is complete, you can start the “CX-120 Status Monitor” from All user’s Start menu.



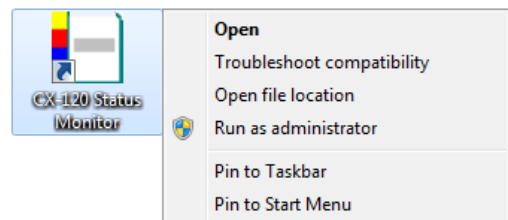
Caution

The following error may occur when the status monitor is started up.



Cause: The status monitor cannot run because it is an unidentified program by Windows®.

Action: Choose the “Run as administrator”, and the status monitor runs by a user within administrator authority. After that, this error does not occur because it becomes identified program by Windows®.



Caution

Even if a user logged on with the administrator account, the status monitor may be run by a user without administrator authority.

Installing the USB Driver

Important

The USB driver is also installed while you are installing the printer driver.
Install the USB driver additionally only when you do not want to use the printer driver but want to use the status monitor.

1. Do not connect the printer to the USB, or turn on the power of the printer until instruction asking you to do so appears.

Caution

You need to enable the USB hub before connecting the printer via this hub.

Do not connect the printer to the USB hub until it is enabled.

2. Start up Windows®.
3. Set the CD-ROM supplied into the PC.
(On Windows® 8, Windows® 7, Windows® XP or Windows® 2000.)
(On Windows Vista™, do not set the CD-ROM at this time.)

Caution

Installing needs administrator authority.

Note

The "SETUP.exe" automatic execution program in the CD-ROM is not used. [Exit] this program.

For details on the "SETUP.exe" automatic execution program, refer to the chapter on "Installer (Automatic Execution Program)."

4. Connect the PC and printer using a USB cable, followed by turning on the power of the printer.

On Windows Vista™, Windows® XP or Windows® 2000, the printer is automatically detected by the PC.

On Windows® 8 and Windows® 7, the printer is not automatically detected by the PC. Install the "Card Printer" manually from the "Device Manager".

5. Follow the steps on Windows® XP, Windows® 8 / Windows® 7, Windows Vista™ or Windows® 2000 to install the USB driver.

Installation (Cont'd)

Windows® XP

1. When the following screen appears,
 - (1) select [No, not this time],
 - (2) and click the [Next] button.

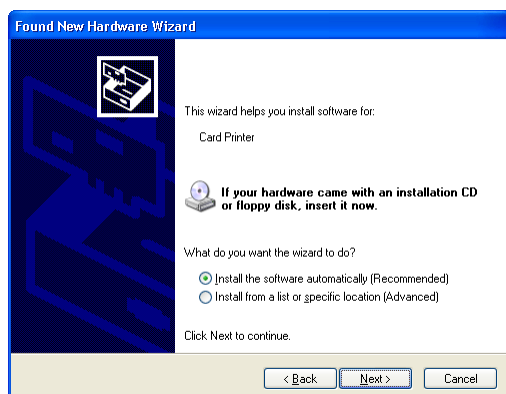
(Windows® XP)



Caution

If the connection is improper, this screen does not appear as the printer will not be detected.

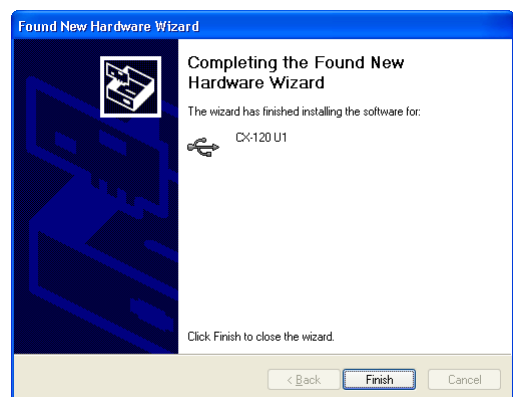
2. When the following screen appears,
 - (1) select [Install the software automatically],
 - (2) and click the [Next] button.



3. When the following screen appears, click the [Continue Anyway] button.



4. When the following screen appears, click the [Finish] button.

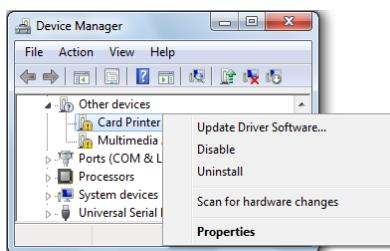


Installation of the USB driver is complete.

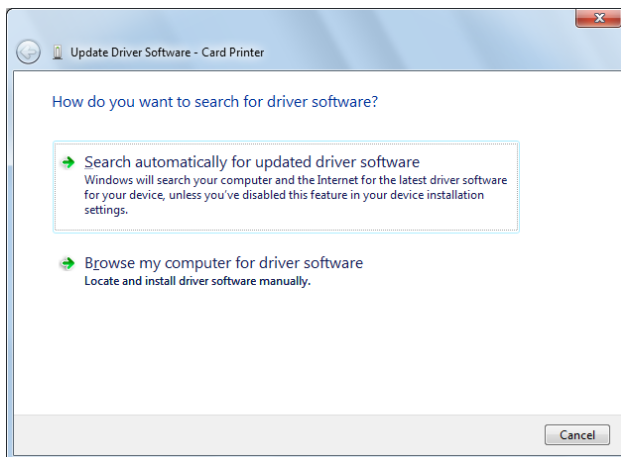
Installation (Cont'd)

Windows® 8 / Windows® 7

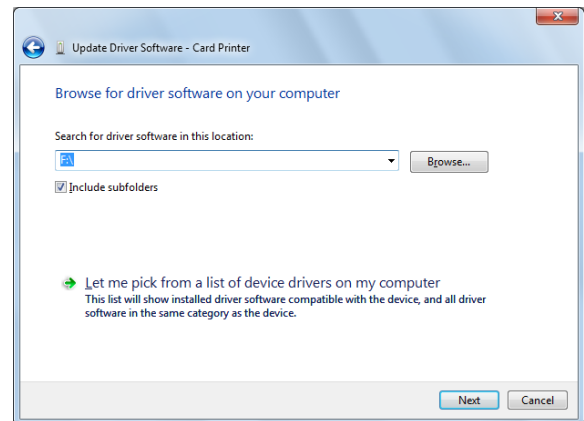
1. Open [Device Manager] in [Control Panel], Check to ensure that a [Card Printer] is found in the [Other devices].
2. Click [Update Driver Software...] under a [Card Printer] menu.



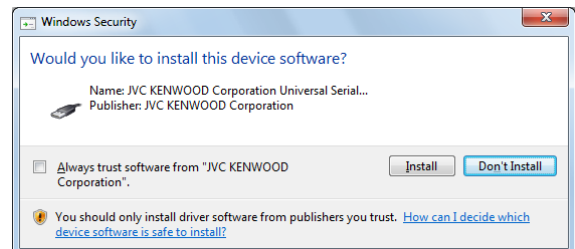
3. When the following screen appears, click [Browse my computer for driver software].



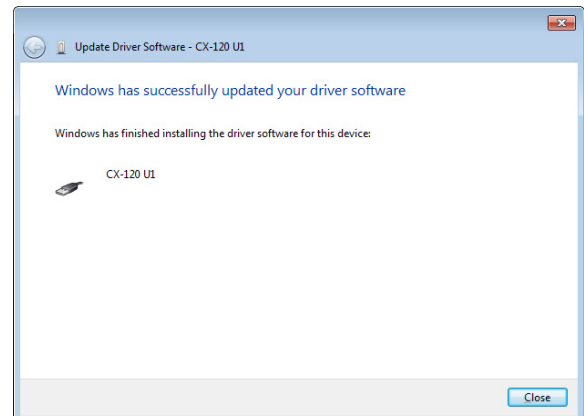
4. When the following screen appears,
 - (1) Click [Refer], select the CD-ROM
 - (2) Check [include subfolders]
 - (3) Click [Next]



5. When the following screen appears, Click [Install]



When the following screen appears, click [Close].

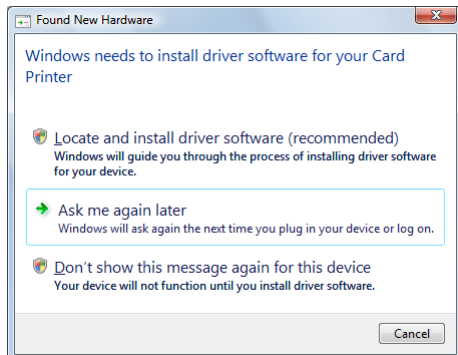


Installation of the USB driver is complete.

Installation (Cont'd)

Windows Vista™

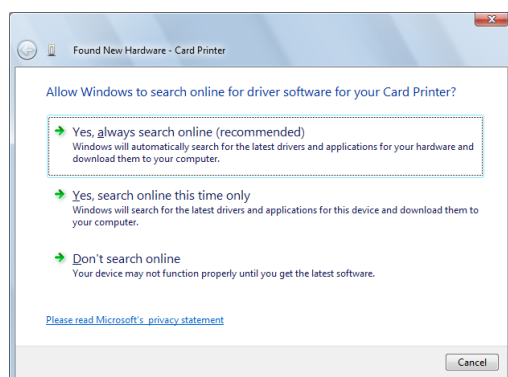
1. When the following screen appears, click the [Locate and Install driver software (recommended)].



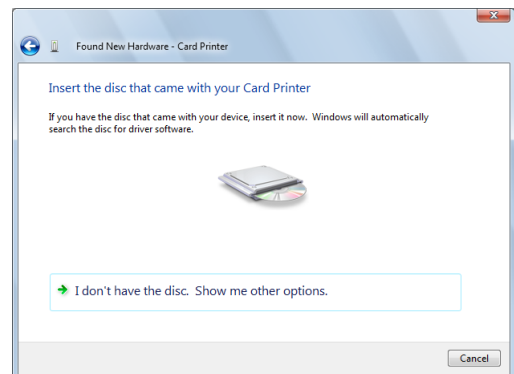
Caution

If the connection is improper, this screen does not appear as the printer will not be detected.

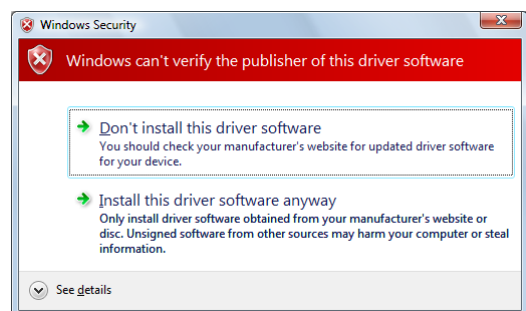
2. When the "User Account Control" screen appears, click the [Continue] button.
3. When the following screen appears, click the [Don't search online].



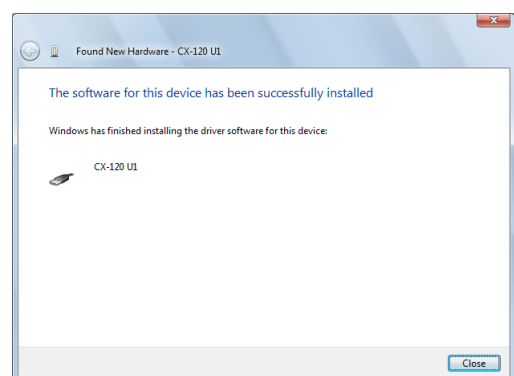
4. When the following screen appears, set the CD-ROM supplied into the PC.



5. When the following screen appears, click the [Install this driver software anyway].



6. When the following screen appears, click the [Close] button.



Installation of the USB driver is complete.

Installation (Cont'd)

Windows® 2000

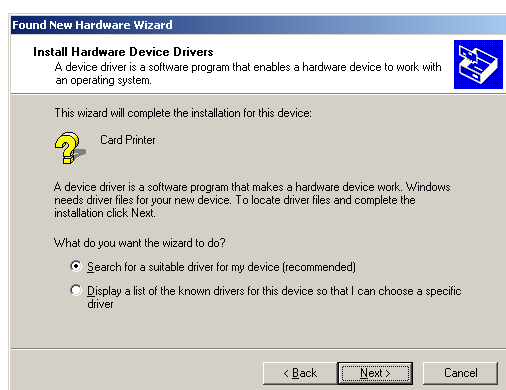
1. When the following screen appears, click the [Next] button.



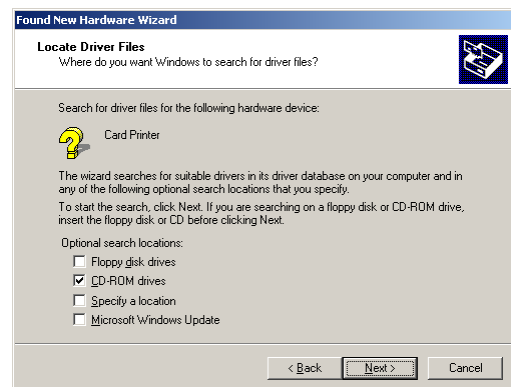
Caution

If the connection is improper, this screen does not appear as the printer will not be detected.

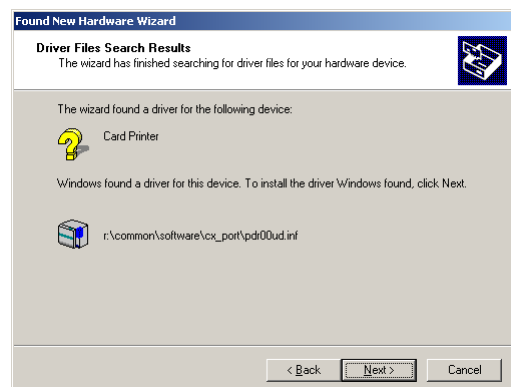
2. When the following screen appears,
 - (1) select [Search for a suitable driver for my device],
 - (2) and click the [Next] button.



3. When the following screen appears,
 - (1) select [CD-ROM drives],
 - (2) and click the [Next] button.



4. When the following screen appears, click the [Next] button.



5. When the following screen appears, click the [Finish] button.



Installation of the USB driver is complete.

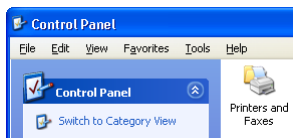
Installation (Cont'd)

Installing the Printer Driver: Shared Network

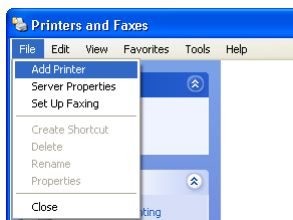
Windows® 2000 / Windows® XP

1. Check to ensure that you can access the PC to which the printer is connected. Check also to ensure that the printer can be shared.

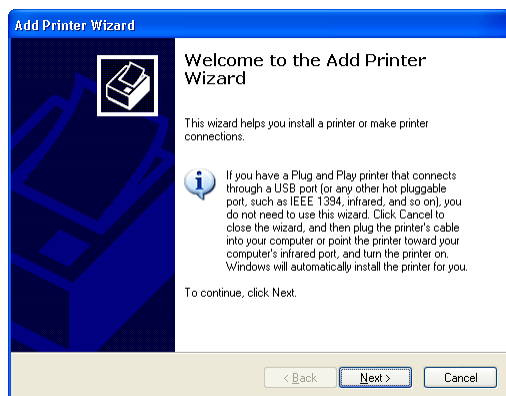
2. Open [Control Panel] in [My Computer], followed by double-clicking [Printers and Faxes].



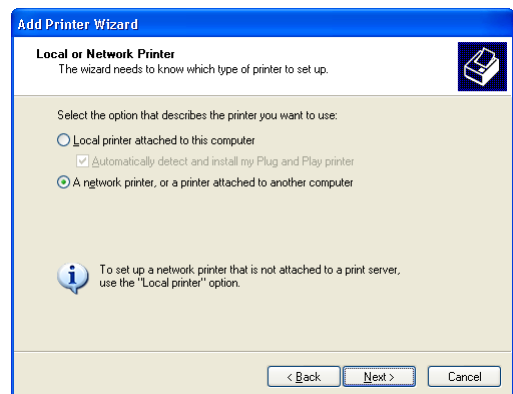
3. When the following screen appears, click [Add Printer] under the [File] menu.



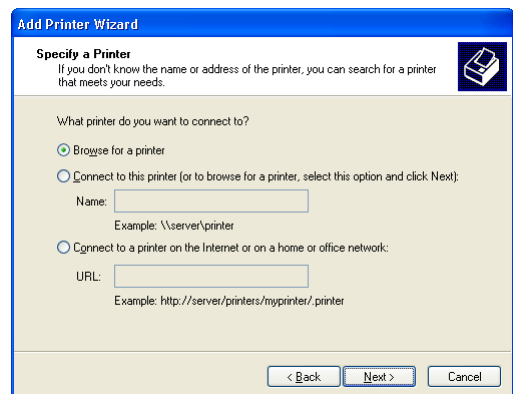
4. When the following screen appears, click the [Next] button.



5. When the following screen appears,
 - (1) select [A network printer, or a printer attached to another computer],
 - (2) and click the [Next] button.

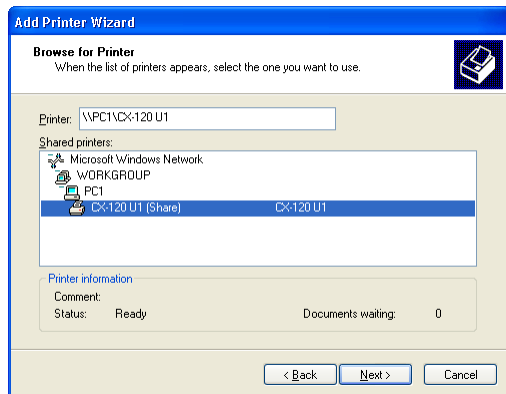


6. When the following screen appears,
 - (1) select [Browse for a printer],
 - (2) and click the [Next] button.

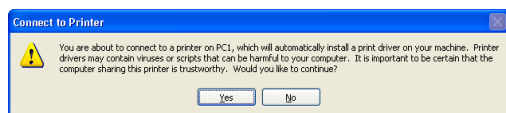


Installation (Cont'd)

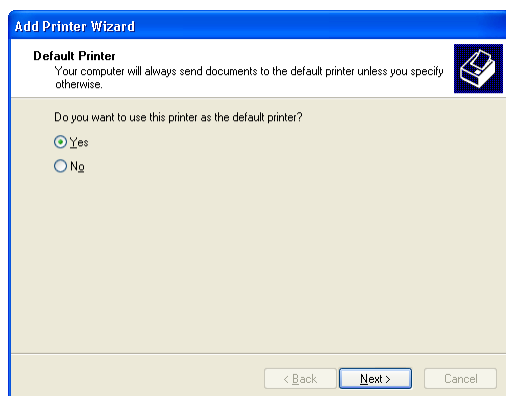
- 7.** When the following screen appears,
- (1) select a printer from [Shared printers],
 - (2) and click the [Next] button.



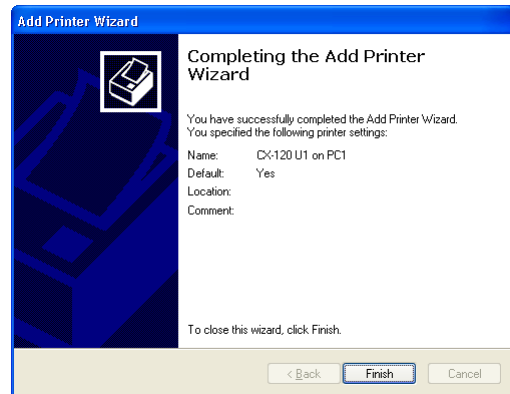
- 8.** When the following screen appears, click the [Yes] button.



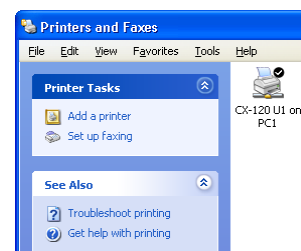
- 9.** When the following screen appears,
- (1) select [Yes] if necessary,
 - (2) and click the [Next] button.



- 10.** When the following screen appears, click the [Finish] button.



- 11.** When the following screen appears, check to ensure that the shared printer is displayed.



Network sharing of the printer driver is complete.

Caution

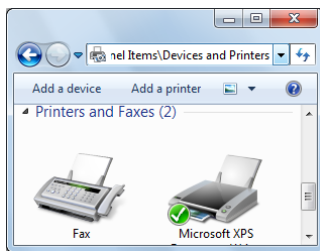
When the access authority of the computer is not proper, the printer may be unable to print, even if installation of the printer driver is completed by the shared network.

Please make the access authority properly according to the instructions of the network administrator.

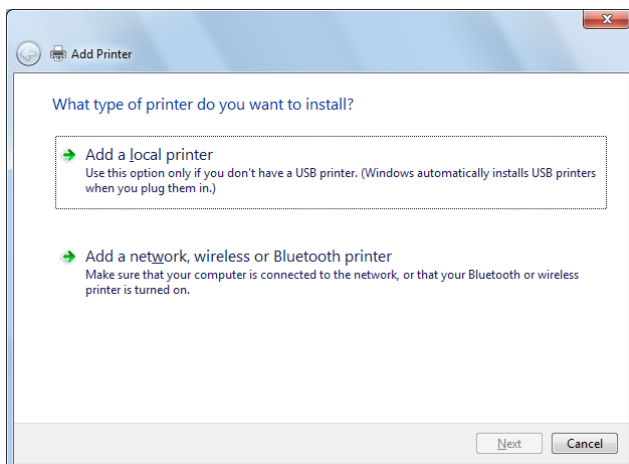
Installation (Cont'd)

Windows® 8 / Windows® 7 / Windows Vista™

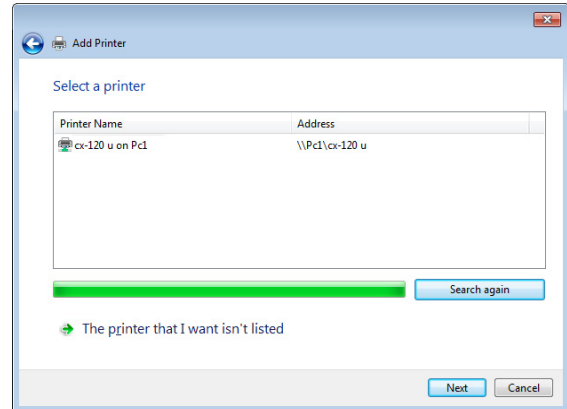
1. Check to ensure that you can access the PC to which the printer is connected. Check also to ensure that the printer can be shared.
2. Open [Control Panel], and double-click the [Devices and Printers] or [Printers].
3. When the following screen appears, click the [Add a printer] in the tool bar.



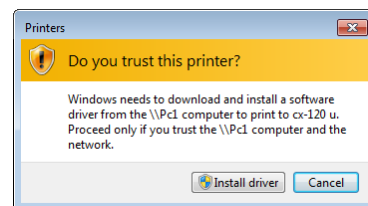
4. When the following screen appears, click the [Add a network, wireless or Bluetooth printer].



5. When the following screen appears,
(1) select a printer,
(2) and click the [Next] button.



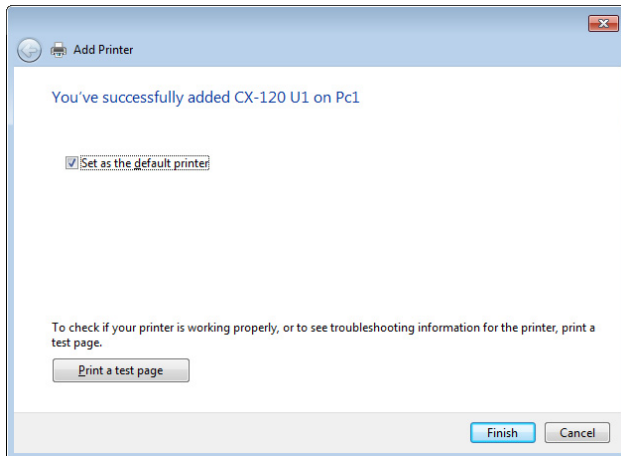
6. When the following screen appears, click the [Install driver] button.



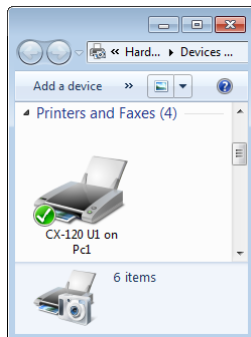
7. When the "User Account Control" screen appears, click the [Continue] button.

Installation (Cont'd)

8. When the following screen appears, select [Make this the default printer] if necessary, and click the [Finish] button.



9. Open [Control Panel], and double-click the [Devices and Printers] or [Printers], check to ensure that the shared printer is displayed.



Network sharing of the printer driver is complete.

Caution

When the access authority of the computer is not proper, the printer may be unable to print, even if installation of the printer driver is completed by the shared network.

Please make the access authority properly according to the instructions of the network administrator.

Uninstallation

Deleting the Printer Driver

1. Connect the PC and printer using a USB cable, followed by turning on the power of the printer.

Caution

Check to ensure that the USB connection printer is recognized on the PC. You will not be able to delete the USB driver properly if the USB connection is not recognized.

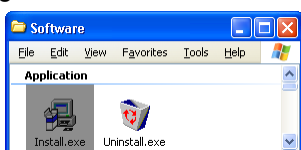
2. Start up Windows®, and set the CD-ROM supplied into the PC.

Caution

Deleting needs administrator authority.

3. If you are not using the “SETUP.exe” automatic execution program in the CD-ROM, start the uninstaller for the printer driver by double-clicking the following file in the CD-ROM.

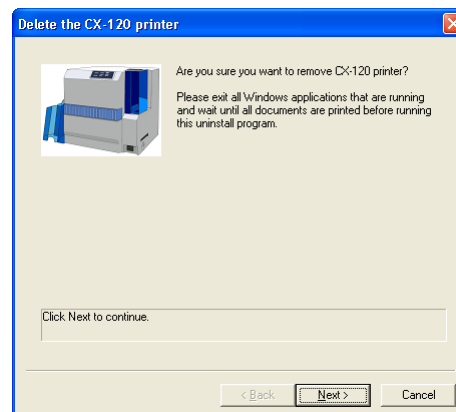
“English\Software\uninstall.exe”



Note

To use the “SETUP.exe” automatic execution program, refer to the chapter on “Installer (Automatic Execution Program).” You can start the uninstaller for the printer driver using the automatic execution program.

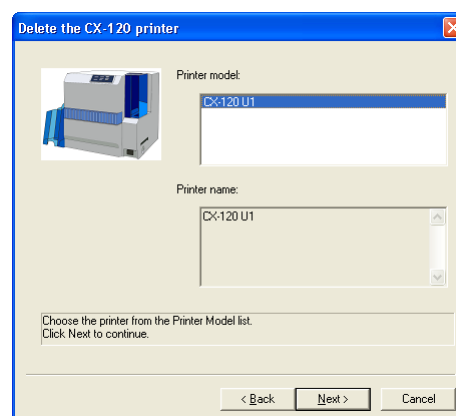
4. When the following screen appears, click the [Next] button.



Caution

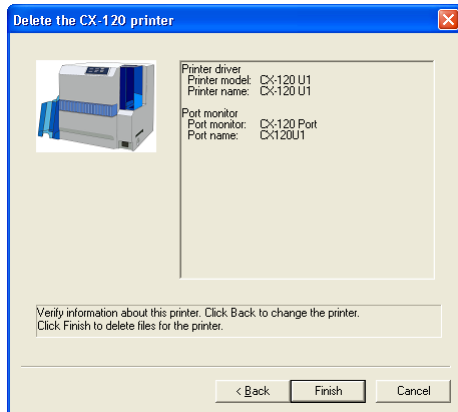
Exit all applications that are currently running. If document printing is currently in progress, wait for all the print jobs to complete.

5. When the following screen appears,
 - (1) select a printer from [Printer model],
 - (2) and click the [Next] button.



Uninstallation

6. When the following screen appears, check the printer information. Click the [Finish] button to start deletion of the printer.



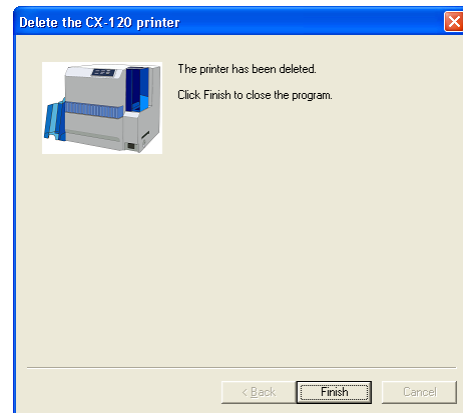
Caution

Delete the printer driver for each unit number accordingly using the uninstaller.

Note

To change a printer, click the [Back] button.

7. When the following screen appears, click the [Finish] button to exit the program.



Deletion of the printer driver is complete.

Caution

To re-install the printer driver, do so using [Install printer driver] after restarting Windows®.

Updating the Printer Driver

Delete and re-install the printer driver.

For procedures to do so, refer to “Installing the Printer Driver” and “Deleting the Printer Driver”.

Uninstallation

Deleting the Status Monitor

1. Exit the CX-120 status monitor.

Caution

Deleting needs administrator authority.

2. Select [CX-120 Status Monitor] from [Programs and Features] or [Add or Remove Programs] in [Control Panel].

Note

If the [Register for start menu] checkbox is selected during installation of the Status Monitor, delete using [Uninstall Status Monitor] from [Start menu].

Note

To use the “SETUP.exe” automatic execution program, refer to the chapter on “Installer (Automatic Execution Program).” You can start the uninstaller for the status monitor using the automatic execution program.

3. When the following screen appears, click the [OK] button to start uninstallation.



Note

If [Error] screen appears, click [OK] to proceed with the uninstallation.

4. When the following screen appears, click the [Finish] button to exit the program.



Deletion of the status monitor is complete.

Updating the Status Monitor

Delete and re-install the status monitor.

For procedures to do so, refer to “Installing the Status Monitor” and “Deleting the Status Monitor”.

Direct Dye Sublimation Printer CX-120 Printer Software Installation Manual